

S.C. Reversible Motor 90W (□ 90mm)

90W

Speed Control
Reversible Motor
90W(□ 90mm)

Motor 사양

Model 9SRDG*~90F2 □ : Gear Type Shaft 9SRDD*~90F2: D-Cut Type Shaft 9SRDK*~60F2: Key Type Shaft	Output W	Voltage V	Frequency Hz	Poles	Duty	Speed Range r/min	Starting Torque		Permissible Torque				Capacitor μF / VAC
							kgfcm	N.m	1200r/min		90r/min		
Lead Wire Type							kgfcm	N.m	kgfcm	N.m	kgfcm	N.m	
9SRDG1(A)-90F2 □	90	1 φ110	60	4	30min.	90-1700	6.00	0.600	7.30	0.730	3.00	0.300	25.0 / 250
9SRDG2(D)-90F2 □	90	1 φ220	60	4	30min.	90-1700	6.00	0.600	7.30	0.730	3.00	0.300	6.5 / 450
9SRDGE-90F2 □	90	1 φ220	50	4	30min.	90-1400	5.50	0.550	7.00	0.700	2.80	0.280	6.5 / 450
		1 φ240					6.00	0.600	7.50	0.750	3.30	0.330	

- 1) 모터 모델명 * 자리에는 전압코드가, □ 안에는 부착되는 감속기의 모델 타입명이 들어갑니다.
- 2) 전압코드 A, D, E는 TP(Termal Protector) 부착 사양입니다.
- 3) Gear Type Shaft는 감속기 부착용이며 D-Cut & Key Type Shaft는 모터 단독 사용시의 출력축입니다.

감속기 부착 시 최대허용토크

Motor Model	Gearbox Model	회전 속도 r/min	전압 V	주파수 Hz	감속비	2	3	3.6	5	6	7.5	9	10	12.5	15	18	20
9SRDG*~90F2P	9PBK □ BH 9PFK □ BH	1200	110	60	kgfcm	11.8	17.7	21.3	29.6	35.5	44.3	53.2	59.1	66.6	79.9	95.9	106.6
					N.m	1.16	1.74	2.09	2.90	3.48	4.35	5.22	5.79	6.53	7.83	9.40	10.44
					220	60	kgfcm	11.8	17.7	21.3	29.6	35.5	44.3	53.2	59.1	66.6	79.9
		N.m	1.16	1.74	2.09	2.90	3.48	4.35	5.22	5.79	6.53	7.83	9.40	10.44			
		90	220	60	kgfcm	11.3	17.0	20.4	28.4	34.0	42.5	51.0	56.7	63.9	76.7	92.0	102.2
					N.m	1.11	1.67	2.00	2.78	3.33	4.17	5.00	5.56	6.26	7.51	9.01	10.02
220/240	50				kgfcm	4.9	7.3	8.7	12.2	14.6	18.2	21.9	24.3	27.4	32.9	39.4	43.8
N.m	0.48	0.71	0.86	1.19	1.43	1.79	2.14	2.38	2.68	3.22	3.86	4.29					
220/240	50	kgfcm	4.9	7.3	8.7	12.2	14.6	18.2	21.9	24.3	27.4	32.9	39.4	43.8			
		N.m	0.48	0.71	0.86	1.19	1.43	1.79	2.14	2.38	2.68	3.22	3.86	4.29			
		N.m	4.5	6.8	8.2	11.3	13.6	17.0	20.4	22.7	25.6	30.7	36.8	40.9			
N.m	0.44	0.67	0.80	1.11	1.33	1.67	2.00	2.22	2.50	3.00	3.61	4.01					

Motor Model	Gearbox Model	회전 속도 r/min	전압 V	주파수 Hz	감속비	25	30	36	40	50	60	75	90	100	120	150	180	200					
9SRDG*~90F2P	9PBK □ BH 9PFK □ BH	1200	110	60	kgfcm	120.5	144.5	173.4	192.7	200.0	200.0	200.0	200.0	200.0	200.0	200.0	200.0	200.0	200.0				
					N.m	11.80	14.16	17.00	18.89	19.60	19.60	19.60	19.60	19.60	19.60	19.60	19.60	19.60	19.60	19.60	19.60		
					220	60	kgfcm	120.5	144.5	173.4	192.7	200.0	200.0	200.0	200.0	200.0	200.0	200.0	200.0	200.0	200.0	200.0	
					N.m	11.80	14.16	17.00	18.89	19.60	19.60	19.60	19.60	19.60	19.60	19.60	19.60	19.60	19.60	19.60	19.60	19.60	
					220/240	50	kgfcm	115.5	138.6	166.3	184.8	200.0	200.0	200.0	200.0	200.0	200.0	200.0	200.0	200.0	200.0	200.0	200.0
							N.m	11.32	13.58	16.30	18.11	19.60	19.60	19.60	19.60	19.60	19.60	19.60	19.60	19.60	19.60	19.60	19.60
		90	220	60	kgfcm	49.5	59.4	71.3	79.2	99.0	118.8	132.8	159.3	177.0	200.0	200.0	200.0	200.0	200.0	200.0	200.0		
					N.m	4.85	5.82	6.99	7.76	9.70	11.64	13.01	15.61	17.35	19.60	19.60	19.60	19.60	19.60	19.60	19.60		
					220/240	50	kgfcm	49.5	59.4	71.3	79.2	99.0	118.8	132.8	159.3	177.0	200.0	200.0	200.0	200.0	200.0	200.0	
					N.m		4.85	5.82	6.99	7.76	9.70	11.64	13.01	15.61	17.35	19.60	19.60	19.60	19.60	19.60	19.60		
					220/240	50	kgfcm	46.2	55.4	66.5	73.9	92.4	110.9	123.9	148.7	165.2	198.2	200.0	200.0	200.0	200.0	200.0	
							N.m	4.53	5.43	6.52	7.24	9.06	10.87	12.14	14.57	16.19	19.43	19.60	19.60	19.60	19.60		

- 1) 모터 모델명 □ 안에는 전압코드가 들어갑니다.
- 2) 감속기 모델명 □ 안에는 감속비가 들어갑니다.
- 3) 위의 표에서 색칠된 범위의 감속비를 선택했을 때 감속기의 출력축은 모터의 출력축과 같은 방향으로 회전합니다.
흰색 비어있는 범위의 감속비에서는 감속기 출력축은 모터 출력축의 회전방향과 반대방향으로 회전합니다.
- 4) 회전속도(r/min)는 모터의 동기회전속도(50Hz:1500r/min, 60Hz:1800r/min)를 감속비로 나누어 계산합니다. 실제 회전속도는 부하의 크기에 따라 표시보다 2~20% 정도 느립니다.

B AC Motors

S.C. Reversible Motor 90W (□ 90mm)

감속기 부착 시 최대허용토크

Motor Model	Gear box Model	회전 속도 r/min	전압 V	주파수 Hz	감속비	3	3.6	5	6	7.5	9	10	12.5	15	18	20	25
9SRDG*~90F2H	9HBK □ BH	1200	110	60	kgfcm	17.7	21.3	29.6	35.5	44.3	53.2	59.1	66.6	79.9	95.9	106.6	120.5
					N,m	1.74	2.09	2.90	3.48	4.35	5.22	5.79	6.53	7.83	9.40	10.44	11.80
					kgfcm	17.7	21.3	29.6	35.5	44.3	53.2	59.1	66.6	79.9	95.9	106.6	120.5
	9HFK □ BH	90	110	60	kgfcm	7.3	8.7	12.2	14.6	18.2	21.9	24.3	27.4	32.9	39.4	43.8	49.5
					N,m	0.71	0.86	1.19	1.43	1.79	2.14	2.38	2.68	3.22	3.86	4.29	4.85
					kgfcm	7.3	8.7	12.2	14.6	18.2	21.9	24.3	27.4	32.9	39.4	43.8	49.5
		220/240	50	kgfcm	17.0	20.4	28.4	34.0	42.5	51.0	56.7	63.9	76.7	92.0	102.2	115.5	
				N,m	1.67	2.00	2.78	3.33	4.17	5.00	5.56	6.26	7.51	9.01	10.02	11.32	
				kgfcm	6.8	8.2	11.3	13.6	17.0	20.4	22.7	25.6	30.7	36.8	40.9	46.2	
					N,m	0.67	0.80	1.11	1.33	1.67	2.00	2.22	2.50	3.00	3.61	4.01	4.53

Motor Model	Gear box Model	회전 속도 r/min	전압 V	주파수 Hz	감속비	30	36	40	50	60	75	90	100	120	150	180	200	
9SRDG*~90F2H	9HBK □ BH	1200	110	60	kgfcm	144.5	173.4	192.7	240.9	289.1	300.0	300.0	300.0	300.0	300.0	300.0	300.0	
					N,m	14.16	17.00	18.89	23.61	28.33	29.40	29.40	29.40	29.40	29.40	29.40	29.40	29.40
					kgfcm	144.5	173.4	192.7	240.9	289.1	300.0	300.0	300.0	300.0	300.0	300.0	300.0	
	9HFK □ BH	90	110	60	kgfcm	59.4	71.3	79.2	99.0	118.8	132.8	159.3	177.0	212.4	265.5	300.0	300.0	
					N,m	5.82	6.99	7.76	9.70	11.64	13.01	15.61	17.35	20.82	26.02	29.40	29.40	
					kgfcm	59.4	71.3	79.2	99.0	118.8	132.8	159.3	177.0	212.4	265.5	300.0	300.0	
		220/240	50	kgfcm	55.4	66.5	73.9	92.4	110.9	123.9	148.7	165.2	198.2	247.8	297.4	300.0		
				N,m	5.43	6.52	7.24	9.06	10.87	12.14	14.57	16.19	19.43	24.28	29.14	29.40		
				kgfcm	13.58	16.30	18.11	22.64	27.17	29.40	29.40	29.40	29.40	29.40	29.40	29.40		

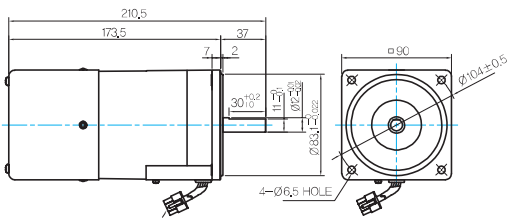
Motor Model	Gearbox Model	회전 속도 r/min	전압 V	주파수 Hz	감속비	10	12	15	18	25	30	36	50	60
9SRDG*~90F2W	9WD □ BL/ □ BR/ □ BRL	1200	110	60	kgfcm	59.9	70.1	84.3	97.2	127.8	144.5	153.1	142.9	122.4
					N,m	5.87	6.87	8.26	9.53	12.52	14.16	15.00	14.00	12.00
					kgfcm	59.9	70.1	84.3	97.2	127.8	144.5	153.1	142.9	122.4
		90	110	60	kgfcm	24.6	28.8	34.7	40.0	52.5	59.4	69.1	90.0	99.0
					N,m	2.41	2.82	3.40	3.92	5.15	5.82	6.77	8.82	9.70
					kgfcm	24.6	28.8	34.7	40.0	52.5	59.4	69.1	90.0	99.0
		220/240	50	kgfcm	27.1	31.7	38.1	44.0	57.8	65.3	76.0	99.0	108.9	
				N,m	2.65	3.10	3.74	4.31	5.66	6.40	7.45	9.70	10.67	
				kgfcm	61.5	72.0	86.6	99.9	131.3	148.5	153.1	142.9	122.4	

Motor Model	Gearbox Model	회전 속도 r/min	전압 V	주파수 Hz	감속비	5	7.5	10	15	20	25	30	40	50	60	80
9SRG*~90F2WH	9WHD □ -030	1200	110	60	kgfcm	25.4	36.8	47.3	66.6	84.1	96.4	112.1	137.8	157.7	163.3	132.7
					N,m	2.49	3.61	4.64	6.52	8.24	9.44	10.99	13.51	15.45	16.00	13.00
					kgfcm	25.4	36.8	47.3	66.6	84.1	96.4	112.1	137.8	157.7	163.3	132.7
		90	110	60	kgfcm	10.4	15.1	19.4	27.4	34.6	39.6	46.1	56.6	64.8	72.0	84.5
					N,m	1.02	1.48	1.91	2.68	3.39	3.88	4.52	5.55	6.35	7.06	8.28
					kgfcm	10.4	15.1	19.4	27.4	34.6	39.6	46.1	56.6	64.8	72.0	84.5
		220/240	50	kgfcm	11.5	16.6	21.4	30.1	38.0	43.6	50.7	62.3	71.3	79.2	92.9	
				N,m	1.13	1.63	2.10	2.95	3.73	4.27	4.97	6.11	6.99	7.76	9.11	
				kgfcm	26.1	37.8	48.6	68.4	86.4	99.0	115.2	141.6	162.0	163.3	132.7	

Dimensions

MOTOR ONLY

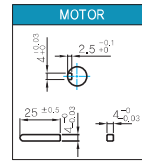
- MOTOR MODEL:
9SRDD□-90F2 (POWERFUL FAN)



LEAD WIRE ASS'Y 300mm
 MOTOR UL STYLE NO.3271 AWG NO.20
 T.G UL STYLE NO.1007 AWG No.22

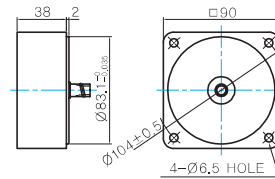
MOTOR OUTPUT SHAFT

MODEL	SPEC
D-CUT TYPE	
9SRDD□-90F2	
KEY TYPE	
9SRDK□-90F2	



중간감속기

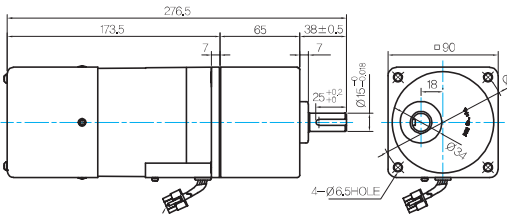
- MODEL: 9XD10□□



GEARED MOTOR

P TYPE GEARBOX

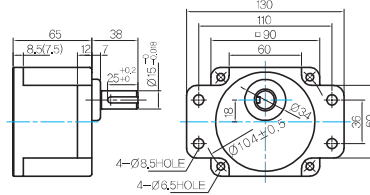
- MOTOR MODEL:
9SRDG□-90F2P (POWERFUL FAN)



LEAD WIRE ASS'Y 300mm
 MOTOR UL STYLE NO.3271 AWG NO.20
 T.G UL STYLE NO.1007 AWG No.22

- GEARBOX MODEL:
9PBK□BH

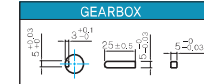
- GEARBOX MODEL:
9PFK□BH



GEARBOX OUTPUT SHAFT

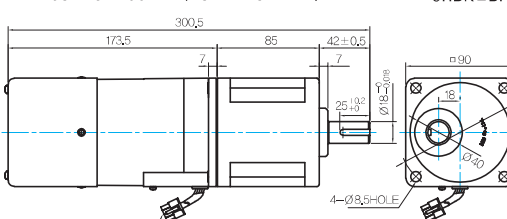
MODEL	SPEC
KEY TYPE	
9PBK□BH	
9PFK□BH	

KEY SPEC



H TYPE GEARBOX

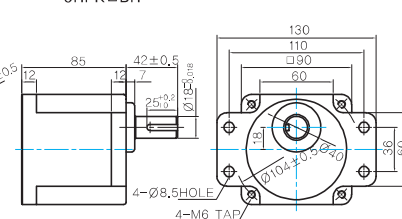
- MOTOR MODEL:
9SRDG□-90F2H (POWERFUL FAN)



LEAD WIRE ASS'Y 300mm
 MOTOR UL STYLE NO.3271 AWG NO.20
 T.G UL STYLE NO.1007 AWG No.22

- GEARBOX MODEL:
9HBK□BH

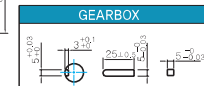
- GEARBOX MODEL:
9HFK□BH



GEARBOX OUTPUT SHAFT

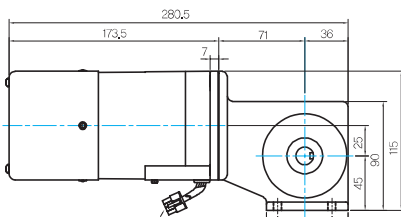
MODEL	SPEC
KEY TYPE	
9HBK□BH	
9HFK□BH	

KEY SPEC



W TYPE GEARBOX

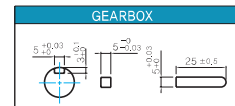
- MOTOR MODEL:
9SRDG□-90F2W (POWERFUL FAN)



LEAD WIRE ASS'Y 300mm
 MOTOR UL STYLE NO.3271 AWG NO.20
 T.G UL STYLE NO.1007 AWG No.22

- GEARBOX MODEL:
9WD□BL/BR/BRL

KEY SPEC



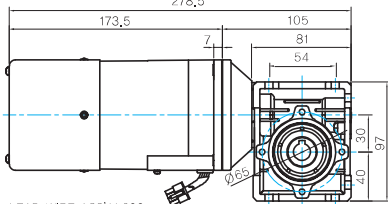
B AC Motors

S.C. Reversible Motor 90W (□ 90mm)

Dimensions

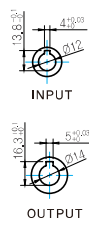
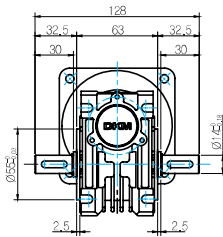
WH TYPE GEARBOX

● MOTOR MODEL:
9SRDG□-90F2WH (POWERFUL FAN)
278,5

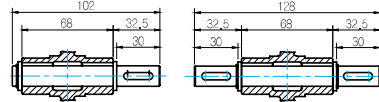


LEAD WIRE ASS'Y 300mm
MOTOR UL STYLE NO.3271 AWG NO.22
T,G UL STYLE NO.1007 AWG No.22

● GEARBOX MODEL:
9WHD□-030



● SHAFT



한방향

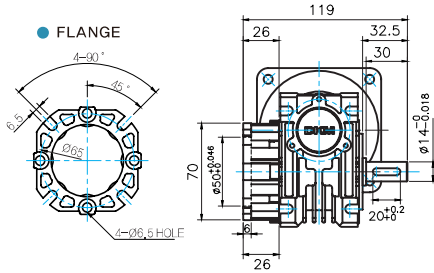
양방향

WEIGHT

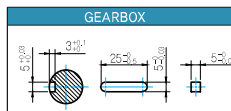
PART	WEIGHT(Kg)
MOTOR	3,5
9PB(F)K2BH - 9PB(F)K10BH	1,28
9PB(F)K12.5BH - 9PB(F)K20BH	1,3
9PB(F)K25BH - 9PB(F)K60BH	1,45
9PB(F)K75BH - 9PB(F)K200BH	1,47
9HB(F)K3BH - 9HB(F)K10BH	1,62
9HB(F)K12.5BH - 9HB(F)K20BH	1,68
9HB(F)K25BH - 9HB(F)K60BH	1,73
9HB(F)K75BH - 9HB(F)K200BH	1,78
9WD□BL/BR/BRL	1,0
9WHD□-030	1,2
9XD10□	0,6

* 출력 FLANGE와 SHAFT는 별매입니다.

FLANGE



KEY SPEC



Motor Images

